

PESTICIDES, HERBICIDES AND FERTILIZERS POLLUTE BODIES OF WATER

Using lower doses of fertilizers, applied more frequently will minimize pollution runoff to our underground water, lakes, streams and ponds. Another option in preventing pollution runoff is to select the appropriate fertilizer for your soil and landscaping.

For information on adjusting your current fertilizing habits, and weed and pest management problems please contact the City of Maitland or the University of Florida-Orange County Extension Office and the Florida Yards and Neighborhoods Program.



DO YOU REALIZE?

- ◆ That pouring, blowing, or sweeping debris into the streets could lead to the polluting of Maitland's lakes?
- ◆ The improper disposal of non-biodegradable detergents, pet wastes, oil, chemicals and debris into the storm drains may cause lake pollution.
- ◆ Storm drains collect rainwater from streets, parking lots and rooftops. In most cases, this polluted stormwater runoff drains directly into the lakes through the underground stormsewer system.

ILLEGAL DISPOSALS

If you are aware of any illegal disposals due to the pouring, blowing or sweeping of non-biodegradable detergents, pet waste, oil, chemicals or yard debris into the streets, allies or storm drains of your community please contact the city giving a location, time and details about the violation.

Violations that are reported while in progress can often be corrected quickly and may result in little or no pollution entering our lakes.

FOR MORE INFORMATION CALL:

**CITY OF MAITLAND
ENGINEERING/ENVIRONMENTAL SERVICE
DIVISION:
(407) 539-6252**

**ORANGE COUNTY:
-LANDFILL/ HOUSEHOLD HAZARDOUS
WASTE FACILITY:
(407) 836-6600**

**-ENVIRONMENTAL PROTECTION
DIVISION EMERGENCY RESPONSE
PAGER NUMBER:
(407) 400-5831**

**-UNIVERSITY OF FLORIDA-ORANGE
COUNTY COOPERATIVE
EXTENSION SERVICE & FLORIDA
YARD AND NEIGHBORHOODS
PROGRAM:
(407) 836-7570**

**-SPILL HOTLINE STATE WARNING
POINT (> 25 GALLONS):
(800) 320-0519**

**FLORIDA DEPARTMENT OF
ENVIRONMENTAL PROTECTION
CENTRAL FLORIDA:
(407) 894-7555**



CITIZEN'S GUIDE TO STORMWATER POLLUTION



FIND OUT HOW YOU CAN HELP

**GET INVOLVED NOW & CALL
(407) 539-6252**

Prepared for the City of Maitland by:

Public Works Department
Engineering/Environmental
Services Division
1776 Independence Lane
Maitland, FL 32751
and
Orange County Environmental
Protection Division
800 Mercy Drive Suite 4
Orlando, FL 32808

EROSION AND SEDIMENTATION

The Clean Water Act was established in 1972 to protect our waterways. This legislation was passed in response to growing public concerns about the serious and widespread water pollution issues. Sediment is one of the greatest pollutants, by volume, entering our lakes and streams and is a product of uncontrolled erosion.

BY CONTROLLING SEDIMENT AND EROSION, YOU CAN?

- ◆ Prevent the loss of fertile topsoil.
- ◆ Avoid filling lakes and streams.
- ◆ Reduce flooding.
- ◆ Prevent endangering plant and animal life.
- ◆ Avoid damaging our streets and roads.

Other pollutants such as pesticides, herbicides, and oil can become attached to eroded soil entering lakes and streams along with the soil.



WHAT PREVENTATIVE MEASURES CAN YOU TAKE?

- Plant and maintain vegetation on bare and sloped areas.
- Collect roof drainage in barrels or storage containers and route to lawns, and paving or gravel driveways. Rain barrels are an excellent way to conserve water. Rain

collected in barrels can be reused to water your lawn.

- Preserve existing vegetation.

These measures will help curb erosion and sedimentation and will maintain the aesthetics and cleanliness of our lakes and streams

PROTECT YOUR WATERS

DISPOSE OF LEAVES AND GRASS CLIPPINGS APPROPRIATELY

Leaves and grass clippings that reach our lakes through the storm drain system decrease the amount of oxygen in the water, as they decompose, possibly resulting in the death of the lakes fish population. Released nutrients will cause excessive algae and aquatic weed growth.

The City street sweeper can barely keep up with the leaves already on the ground, please don't add to the burden by sweeping or blowing leaves into your streets.



ALTERNATIVE DISPOSAL TECHNIQUES

Consider starting a compost pile for leaves and yard waste or invest in a mulching blade for your lawn mower. A mulching blade allows you to use your grass clippings (grasscycling) as a natural fertilizer. For information on composting or the grasscycling concept please contact the Lakes Management Coordinator at (407) 539-6252.

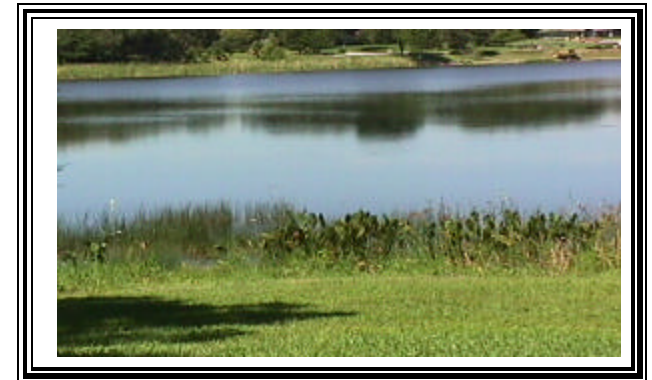
HOUSEHOLD HAZARDOUS WASTES

DO NOT POUR OIL OR ANY CHEMICALS DOWN ANY DRAIN OR IN THE STREET. Dispose of them through the Household Hazardous Waste Facility (HHWF) at the Orange County Landfill.

WHAT CAN YOU BRING TO THE HHWF?

- = Banned and unwanted pesticides
- = Oil based paints
- = Paint thinner and stripper
- = Varnishes and stains
- = Household cleaning fluids
- = Chemical drain cleaners
- = Auto and furniture polish
- = Solvents and flammable liquids
- = Pool chemicals
- = Photography chemicals
- = Chemistry sets
- = Brake fluid and antifreeze
- = Unknown chemicals
- = Household, vehicle, and boat batteries
- = Waste oil

QUESTIONS? CALL AND SPEAK TO THE ENVIRONMENTAL STAFF AT THE ORANGE COUNTY LANDFILL/ HOUSEHOLD HAZARDOUS WASTE FACILITY: (407) 836-6600.



PROTECT YOUR WATERWAYS

